

Company introduction



“Since 1970 RCM has designed, manufactured and marketed floor cleaning equipment for the professional user.

RCM range of industrial and municipal sweepers as well as scrubber/driers are recognised worldwide for their performance and reliability

Company introduction

Three factories in Casinalbo (Modena), two branches in Milan and Barcelona (Spain), and a service company, totalling 13,000 sq.m. and employing 120 people; a sales network that reaches 32 countries worldwide; ISO 9001 quality certification; with these figures RCM today has a 30% market share in Italy, the second largest producer of cleaning machines in the world after the USA.



Company introduction



RCM is 100% owned by Raimondi family (Raimondi Construction Machines). The company was founded in 1899 (see history at the end of presentation) and today the third and fourth generation is in charge of the company at managing level. At RCM the president Roberto Raimondi as well as decision making persons are in first line in the business to allow fast resolution of any problem.

RCM in the world



RCM is today present in: Austria, Belgio, Cipro, Croazia, Danimarca, Francia, Germania, Grecia, Italia, Lituania, Malta, Norvegia, Olanda, Polonia, Portogallo, Russia, Spagna, Slovenia, Slovacchia, Svezia, Svizzera, Ungheria, Argentina, America centrale, Cile, Barbados, Brasile, Messico, USA, Uruguai, Australia, Corea, Emirati Arabi, Egitto, Giordania, Siria, Turchia, Israele, Cina, India, Malesia, Nuova Zelanda, Nuova Caledonia, Siria, Singapore, Tahiti, Taiwan, Tailandia.

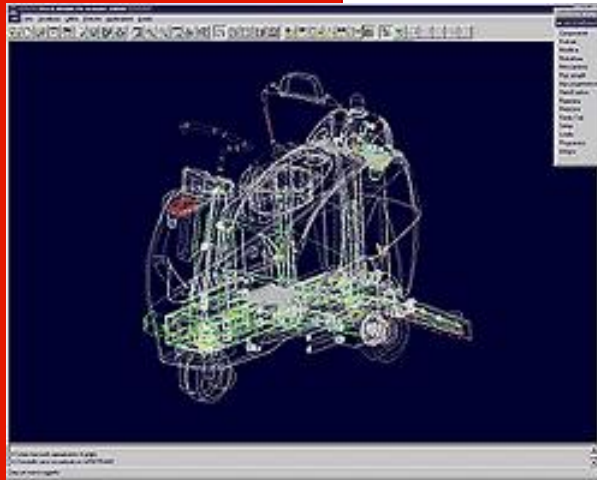
ISO 9000 Quality certification



“RCM who have always paid attention to the quality of their products, is ISO 9001:2000 certified.

“This ensures control of quality standards throughout production, from designing components , to production, to after sales service

3D Design



“For over 30 years RCM have been one of the most innovative companies for design, manufacture and technical solutions. RCM design with the most up-to-date 3D CAD system which has developed advanced industrial production systems for the cleaning sector as well as their own patents such as 'vacuum on side brushes' and 'emptying into a sack'.

“RCM offers the services of its technical and R&D Department to design special machines and accessories for customers according to their cleaning needs

manufacturing



RCM not only designs and assembles its machines but also manufactures the chassis. This system allows RCM to control the quality of all machine parts using modern robotic cutting, bending and welding machinery.



ranges of roducts



SWEEPERS to pick up all kinds of debris from the ground without raising dust. Pedestrian, ride-on, petrol, battery and diesel driven, from 65 cm up to 200 cm cleaning path



SCRUBBER DRIERS to wash and dry all types of floor in one pass. Pedestrian, ride-on, electric and battery driven, from 45 to 106 cm cleaning path



STREET SWEEPERS to pick up debris quickly from pavements, arcades, cycle paths and all pedestrian. Pedestrian, ride-on, petrol, battery and diesel driven, from 65 cm up to 200 cm cleaning path

Industrial sweepers

Ride-on
high dump



Ride-on



pedestrian



Scrubber driers

Ride-on



pedestrian



pedestrian



Street sweepers



Brava street



R 703 sack



Ronda

Pre-sales service



“Buying an RCM machine means purchasing not only a first class industrial product but also be part an organisation who take care of you and your machine

“Export department is committed in give our dealer all the support with quick, efficient and personalised answer .

“RCM offer training courses for sales personnel, operators and technicians, sales and technical advices, demonstration service, marketing support and finalcial service.

Training



“RCM have always invested in the training of its internal and external personnel to guarantee a fast and professional customer service. In 2002 RCM opened a new facility for sales and technical training of RCM dealers, complete with modern audio and video systems and a demonstration area to combine practical and theoretical training.

After-sales service

“Quick and efficient technical after sales support is essential for any sales network to enable it to successfully compete in the market.

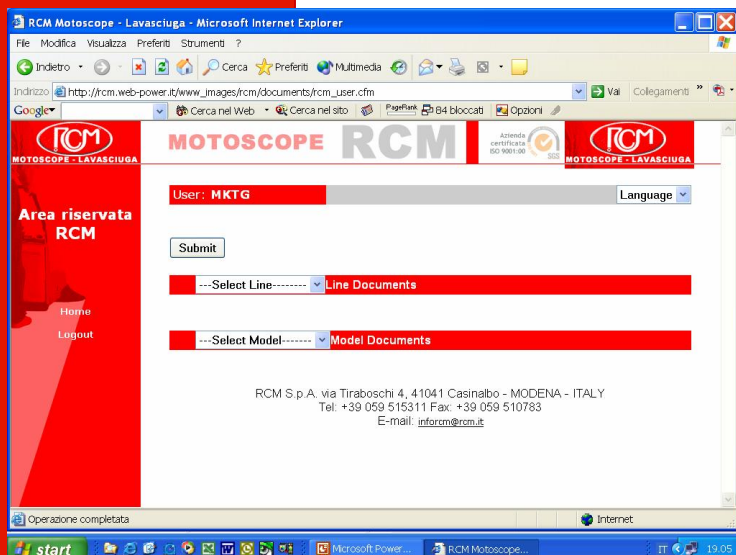
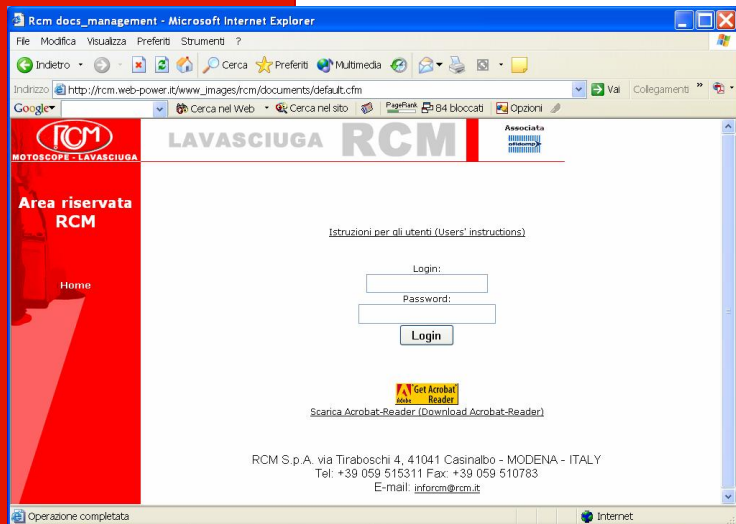
A team of engineers and technicians to support our export dealer network are committed to providing after sales support for RCM machines.



On line documentation

On the RCM web site a private area where our dealers, with a password, can have all commercial and technical documentation of RCM products in PDF format, 24 hours a day, 7 days a week.

- Depliant
- Comparison chart with competitors
- User manual
- Spare parts manual
- Technical data
- Technical bulletin
- Suggested spare parts list



Spare parts



“RCM spare parts stock cover an area of 1000 sqm and counts over 11.000 different items for prompt delivery.

“RCM keep in stock and supply parts of old machines out of production even longer than 10 years required by law.



Some RCM customers

- **Army:** Italian, French, English, Greek, Russian, Australian Army
- **Automotive:** Ferrari, Fiat, Maserati, Lamborghini, Mercedes, Kamaz, Hyundai, Daewoo, Ducati, McLaren
- **Retail:** Carrefour, Metro, Tesco, Coop, Waitrose, Ikea
- **Ceramic fact:** IRIS, Mirage, Cisa-Cerdisa, Fllor Gres, Edilcuoghi, Concorde, Marazzi, Ricchetti, Atlas
- **Cement fact.** Italcementi, Weber Brutin
- **Steel fact.:** Marcegaglia, Thyssen
- **Logistics:** Martinair, Next, Exel, TNT
- Municipality:** London, Kuala Lumpur, Athens, Bucarest, Lisbon, Wien
- **Electronic:** Rank Xerox, Agfa, Kodak, Toshiba, Philips, Sony
- **Food:** Coca Cola, Wetabix, Dreher, Nestlè, Barilla
- **Chemistry:** ICI, Procter&Gamble, Esso, Shell, BP, Dunlop, Michelin, Petronas



Your complimentary
use period has ended.
Thank you for using
PDF Complete.

[Click Here to upgrade to
Unlimited Pages and Expanded Features](#)

people & technology

Contact

RCM spa
Via Tiraboschi 4
41041 Casinalbo, MODENA
ITALY
Tel +39 059 515331
Fax +39 059 510783
www.rcm.it

General information info@rcm.it
Export sales exportdpt@rcm.it
Parts ricambi@rcm.it
After-sales infotec@rcm.it

History of RAIMONDI Company

The origins of RCM S.p.a. (Raimondi Construzione Macchine), as it is called today, go back to the end of the last century and are closely linked to the Raimondi family. In 1899, in Parma, Ippolito Raimondi, the paternal grandfather of RCM's present owners, produced and marketed a complete range of 'modern bicycles' under the trademark of Cypselus. Some models, like the 'chainless bicycle' with universal cardan shaft transmission or the 'novelty holiday bicycle' with different sized wheels, show how production was intent on finding innovative technical solutions. At this time (1899) Ippolito was also representing the 'Ditta Societa Italiana Bernardi' di Padova which manufactured some of the most revolutionary automobiles that were then available. Just think, Fiat was founded in the same year, 1899.



History of RAIMONDI Company



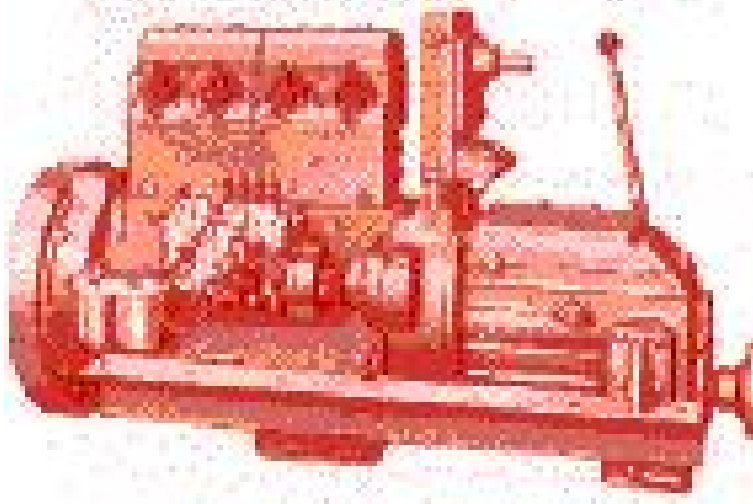
At the beginning of the twentieth century, Ippolito moved to Modena, to Carrozzeria Orlandi, which was also established in 1899, where he was put in charge of developing the design construction of an automobile. Bicycle production continued for a few more years under one of Ippolito's four sounds, Romeo. This went on until he too moved to Modena where he worked, first at the Gatti shell factory (1915-1918) and then for a short while in an automobile repair shop.

In 1922 Romeo, with his partner Malagoli, set up the MR company to build motorcycles. In 1925 MR produced three versions of motorbikes with TRAIN motors: 98 and 123 cc with 'Raimondi type' gradual gears which, as the advertisement announced 'lets you start from stationary as efficiently as with the best clutch'. Between 1926 and 1928 about 100 motorcycles were produced.

History of RAIMONDI Company



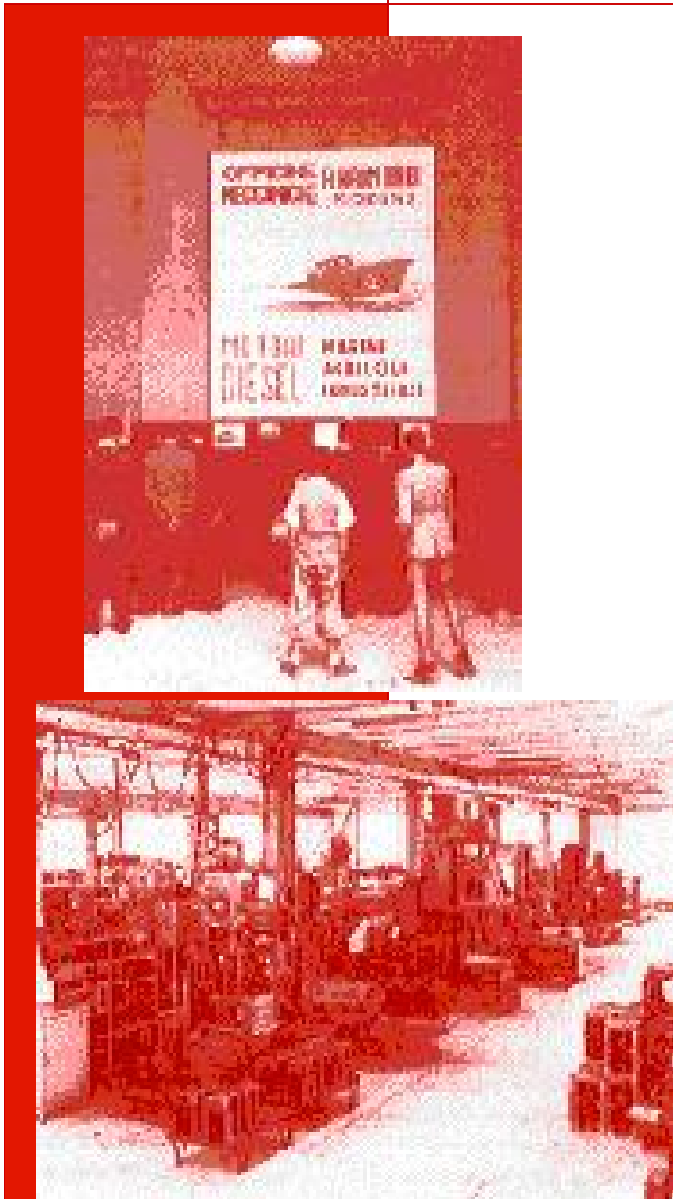
In 1928 the company changed its name and the new Officina Meccanica Romeo Raimondi went into production of industrial motors. Initially these were two-stroke and then, in 1932, four stroke. In 1934 the RC Company of Raimondi and Caiumi was producing 13 types of pump motors for irrigation. Some of these used diesel engines of 6, 10 and 15 CV. 1935 saw the start of Seacraft Motors which were a main feature of the company until the mid-sixties. During this thirty-year period more than 20 models of diesel engines were built, from 10 to 100 CV, which were used in various kinds of military seacraft, recreation boats and, especially, fishing boats covering a market that went down the Adriatic coast and included all of Sicily.



History of RAIMONDI Company

In tandem with the production of marine motors, 37 different types of industrial motors were also developed from 8 to 80 CV, air or water-cooled, for various different uses. These included tractors, earthmoving machinery, internal transport, etc. After the war production of complete machines started and these were obviously equipped with RC motors. In 1946 the first Tractor was produced by using parts from the war which had 40 CV motors.

In the 1950's many of the components were produced in-house: pistons, bushings etc. and already, since before the war, RC had been among the first diesel engine constructors. At the beginning of the fifties, RC developed advanced technology (motors with head valves) and was competing successfully with production from the giant Fiat.



History of RAIMONDI Company



The Leprotto with its 4 CV diesel engine was used for material handling in furnaces during this period. In 1952/1953 production of the company's battle horse the Bruco began. It was entirely constructed at the company. This was a very imaginative machine featuring four drive wheels and tyres that could become tracks, but with no differential. Over twenty years it was produced in four versions the 40, 45, 50 and 80 CV. Then, in 1956, the production of the R4 (35 CV) was started. This was also a four wheel model with tyres that could become tracks and was marketed by F.lli Rossi of Bologna. Three versions were produced the 15, 25 and 35 CV.

Besides this, which was their main production, RC continued with their creative spirit producing a series of specialised machines, including 50 and 80 CV motorised snow ploughs which were used initially by ANAS at the 1956 Cortina Winter Olympics. One of these machines is still used at RCM S.p.a. during especially heavy snowfalls. The P2 Loader was built following the Bruco concept for use on building sites and in iron mines. The L2 Motor Grader (1964) with 60 CV T 360 diesel engine was also based on the Bruco designed with four wheel drive.

History of RAIMONDI Company Birth of today RCM

In 1967 the Company moved to Casinalbo near Modena where the main factory and head office still operate under the name of RCM snc. The Company, faced with overwhelming competition from national and foreign giants, became unable to compete adequately in terms of its production of marine motors and industrial motors and machines. So in 1967 after experiencing the problem first hand of how to sweep the Casinalbo factory quickly and efficiently, the idea for a new specific machine was sparked off. Following research into sweepers already on the market, the idea came up to produce an inexpensive model, a sweeper that was small enough to suit most Italian companies yet with high performance to handle heavy industrial debris.



Thus the first RCM motor sweeper came into being, the R700 model, being a variation of a German design.

Shortly after this first design came the definitive technical features that are still valid today:

- rear loading hopper for heavy debris as well as dust
- reduction of bulk to a minimum
- large area cellulose filters
- excellent filtering and vacuum capacity.

History of RAIMONDI Company Birth of today RCM



The first R500 sweeper

So, in 1970, RCM created the R500 which was an absolutely new concept in size and construction. The first R500 sweepers (one of which is still in perfect working order and is kept at the via Tiraboschi site) were delivered in 1971. In the same way as Fiat Topolino made the car widely popular in Italy in the forties and fifties, so on a different scale, but in a similar way, the compact new RCM motorised sweeper made thousands of companies realise how useful mechanised cleaning could be.

The R500 was produced until 1991, totalling over 50,000 units, and made a fundamental contribution to the creation of a previously non-existent market, and benefiting the whole industrial cleaning sector. Along with the small R500 there was development in the early seventies of two more extremely important models, and these, along with all other RCM powered sweepers from that moment on had rear hoppers.

History of RAIMONDI Company Birth of today RCM



R850

During this time RCM, cushioned by the success of the first pedestrian-controlled powered sweeper, was already aware of the need for larger machines which could meet the specific demands made by the ceramic tile industry which is common in this area. So the 'eternal' R850 came into being. This powerful sweeper features the greatest sturdiness, handling and is extremely economic. The R850 is still in very high demand, and it has survived to this day basically unchanged in its general design.



R702

The growth of the Company has been steady. Now that RCM feels confident in offering a line of well-tested machines (R500, R701, R850), it is expanding out of its local area and into the European market, broadening its range of products even more. Initially this is with the R702, the first 70 cm ride-on sweeper and later with the larger R900 and R1250 models.

History of RAIMONDI Company Birth of today RCM



R581

From the beginning of the eighties, RCM appears on the market as a well-established European company. The creative spirit inherited from Romeo Raimondi is a constant feature in production. In 1981, at the first PULIRE Exhibition (a renowned Italian Exhibition in this sector) organised by AFIDAMP, RCM introduces the R581. After a decade of intense production of the R500 model and all the replicas which had invaded the market, RCM recognised the need to review its strategic section of the market.

The introduction of revolutionary panel filters, mechanisation of the controls and an angled platform (wedge line) to increase the hopper capacity, marked a turning point in the appearance of pedestrian controlled machines. This highly valuable concept was the start of a revolution which led to the Brava range, the star of the nineties. The R581, like the R500, once again set an example that competitors copied, even down to the colour.

History of RAIMONDI Company Birth of today RCM

Pavement sweeper RX 918

In 1983 with the RCM range already consisting of seven different models, with main brushes from 50 to 1250 cm wide, the Modenese company was already aiming at an ambitious project - the construction of a sweeper to clean pedestrian walkways. This was not to be an adaptation of an existing machine but an entirely new concept in design for urban working conditions. After three prototype designs the RX 918 Swinger was presented at the 1986 INTERCLEAN Exhibition and aroused much interest due to its innovative applied technology and revolutionary design.



History of RAIMONDI Company Birth of today RCM



The brava range
Directly descended from the original R500 and daughter of the R581, in 1991 the Brava revolutionised a sector of the market which was in its final stage due to competition devoid of technical substance. The idea was simple and sprang from a desire to apply to sweepers the basic industrial production concept of keeping costs low while maintaining quality standards.

What sets the Brava apart from other sweepers is the so-called shell structure of the ABS hopper, a single component with a dual function, being a refuse container and a cover for the filter compartment. The simplification of the construction also made it much easier to produce industrially, for example by making the body section from formed sheets. However, the Brava project did not limit itself to one model, the same construction techniques were extended to the Brava 600, Brava 700 and Fyonda. The Brava 600 and Brava 700 were based on the Brava which allowed maximum use of common parts which differed only in size. The Fyonda, a new ride-on sweeper with manual dump, was also part of the Brava series with an entirely new tubular frame capable of holding the entire vacuum/brush unit of the Brava 700 model.

History of RAIMONDI Company Birth of today RCM



Meanwhile, during 1992, RCM had introduced two more very important models, the R703 and R855. These are both ride-on sweepers, the first with manual dump the second with hydraulic high dump, which develop the traditional concepts of visibility and performance while paying extra attention to safety and confining noise levels.

R703 sack

During the same period RCM introduced onto the market a unique sweeper that set a new standard in cleaning quality and dust control, the R703 SACK, the first and only machine that puts all the debris and dust swept up directly into a standard plastic sack, eliminating dust raised during the emptying of the hopper. An innovation that upgraded not only the sweepers level of cleaning but also helped the environment and protected the health of workers.



History of RAIMONDI Company Birth of today RCM



Pavement sweeper Ronda

In the year 2000, from knowledge gained in the municipal sector with the RX 918, City and Coro 140, the Ronda was born. A new sweeper designed for sidewalks and urban areas with an exclusive cleaning system which is dust free and silent.

At ISSA Interclean 2000, RCM presented a new range of ride-on sweepers with hydraulic dump, Boxer, Mille and Duemila, which showed that standardisation of production can be successfully applied to the larger units while still maintaining high quality and performance.

History of RAIMONDI Company Birth of today RCM

Scrubber-drier line

Following the same strategy and construction philosophy of the sweepers, RCM took a new step in its development by introducing at the ISSA Interclean a complete new range of scrubber driers. High investment on both the financial and designing side will ensure RCM a higher level of competitiveness in the market. In years 2001 and 2002 production of scrubber-dryers became consolidate and evolved, the range went basically completed. During exhibition Pulire 2003, several news are presented in the market. Together with the Inox machines for food industries and Mark I with rolling brushes, GO has been introduced as the small and performing scrubber dryer, with a perfect suction and drying and a long endurance. Last but not least, Jumbo, the new ride-on scrubber-dryer has been put beside the powerful Metro.



Some RCM customers

- Army
- Automotive
- Shopping mall
- Ceramic fact.
- Cement fact.
- Steel fact.
- Warehouse
- Municipality
- Italian Army, French Army, Carabinieri
- Ferrari, Fiat, Maserati, Lamborghini
- Carrefour, Metro, Tesco, Coop
- IRIS, Mirage,
- Italcementi, Weber Brutin
- Marcegaglia
- Martinair, Next,
- London, Kuala Lumpur, Athens, Bucarest